

# HB 2017 Transit Advisory Committee

May 7, 2020



# Webex Tutorial

## Features:

- Mute/Unmute
- Video On/Off
- Share Screen
- Participants
  - Right side window
  - Raise your hand
- Chat
  - Right side window
  - Chats are recorded
- Meeting is recorded



# Meeting Agenda

Public Comment	8:00 a.m.
HB 2017 Capital Projects	8:15 a.m.
HB 2017 & STF Update	8:30 a.m.
Equity Areas Update	8:45 a.m.
Meeting Adjourns	9:00 a.m.



# Public Comment



# HB 2017 Capital Projects

Committee Voted on April 24th:

**If STIF revenues are less than projected**

- Prioritize the operating programs (i.e., the pie chart)
- Defer capital expenses (i.e., the “Triangle Funds”)



# HB 2017 Plan

Senior & Disabled  
Transportation  
\$1 mil (2%)

School  
Transportation  
\$490,000 (1%)

Electric  
Bus Program  
\$5 mil (10%)

Regional  
Coordination  
\$3 mil (6%)

Low Income Fare  
\$12 mil (24%)

Service FY19-FY23 \$28 mil (57%)  
Includes buses & system capital:  
More Frequency  
More Coverage  
Later/Earlier Service  
Weekend Service

Security  
\$2 mil (4%)

ETC  
Transit Priority  
\$10 mil (20%)

Amenities  
Digital Displays  
Accessible Bus Stops  
\$10 mil (20%)

Electric Bus Program  
\$28 mil (56%)



# HB 2017 & Special Transportation Funds (STF)

## 2019 Legislative session:

- Legislature directed ODOT to merge HB 2017 Funds and STF
- Maintains FY19-21 minimum base allocation (approx. \$5 mil) adjusted by rate of growth/decline
- Asked ODOT to develop a recommendation for how to merge the programs for the 2020 Legislative short session

## 2020 Legislative short session ended early

- Will have to include STF funds in FY21 STIF Plan without knowing how the programs will be merged

## 2021 Legislative session:

- ODOT recommendation to be voted on prior to July 1, 2021



# Equity Areas Update

## Equity Index 10 Factor Analysis:

- Low income population (200% of poverty)
- People of color
- Limited English proficiency
- People with disabilities
- Senior population
- Youth population
- Low & medium wage jobs
- Limited vehicle access
- Affordable housing units
- Key retail/human/social services

**FY19-21 Map: Top quartile composed the equity areas**

**Request to see equity area maps displaying 15%, 20%, 25% & 30% scoring blocks**



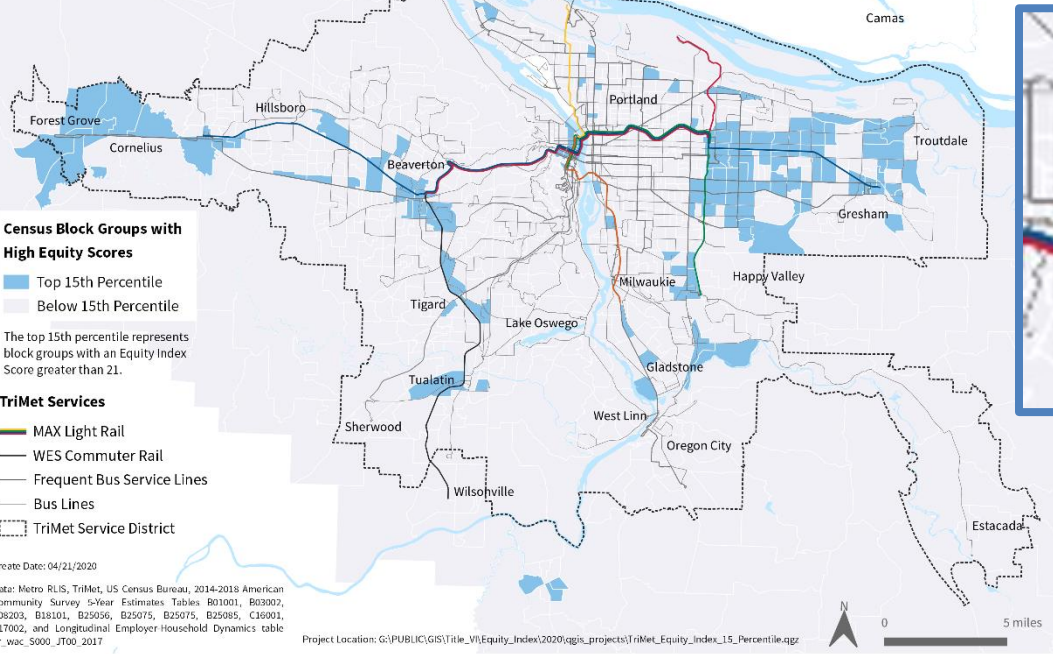


# Equity Areas Update – 15% of blocks

## TriMet District Top 15th Percentile of Equity Index Scores



## Downtown Portland



### Census Block Groups with High Equity Scores

- Top 15th Percentile
- Below 15th Percentile

The top 15th percentile represents block groups with an Equity Index Score greater than 21.

### TriMet Services

- MAX Light Rail
- WES Commuter Rail
- Frequent Bus Service Lines
- Bus Lines
- TriMet Service District

Create Date: 04/21/2020

Data: Metro RLS, TriMet, US Census Bureau, 2014-2018 American Community Survey 5-Year Estimates Tables R01001, B03002, B08203, B18101, B25056, B25075, B25075, B25085, C16901, C17002, and Longitudinal Employer Household Dynamics table or\_wac\_5000 JT00 2017

Project Location: G:\PUBLIC\GIS\Title\_VII\Equity\_Index\2020\cgis\_projects\TriMet\_Equity\_Index\_15\_Percentile.qgz

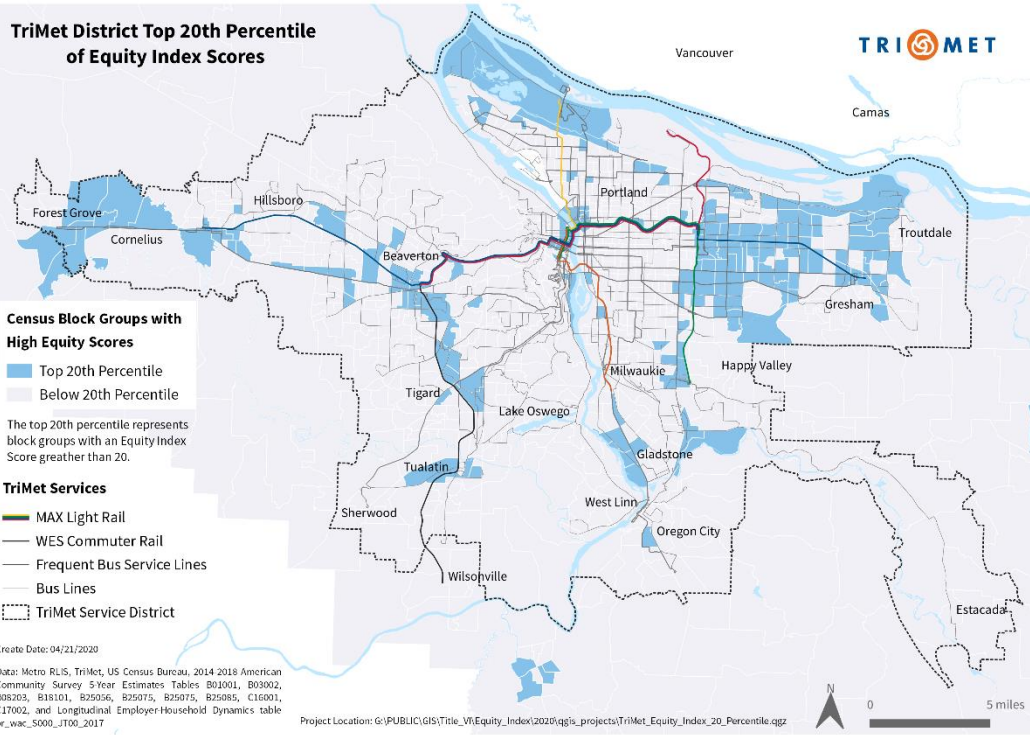


# Equity Areas Update – 20% of blocks

## TriMet District Top 20th Percentile of Equity Index Scores



## Downtown Portland



### Census Block Groups with High Equity Scores

- Top 20th Percentile
- Below 20th Percentile

The top 20th percentile represents block groups with an Equity Index Score greater than 20.

### TriMet Services

- MAX Light Rail
- WES Commuter Rail
- - - Frequent Bus Service Lines
- Bus Lines
- TriMet Service District

Create Date: 04/21/2020

Data: Metro RLIS, TriMet, US Census Bureau, 2014-2018 American Community Survey 5 Year Estimates Tables B01001, B03002, B05203, B18101, B25056, B25075, B25075, B25085, C16001, C17002, and Longitudinal Employer-Household Dynamics table or\_wac\_s000\_j100\_2017

Project Location: G:\PUBLIC\GIS\Title\_VI\Equity\_Index(2020)\qgis\_projects\TriMet\_Equity\_Index\_20\_Percentile.gxz

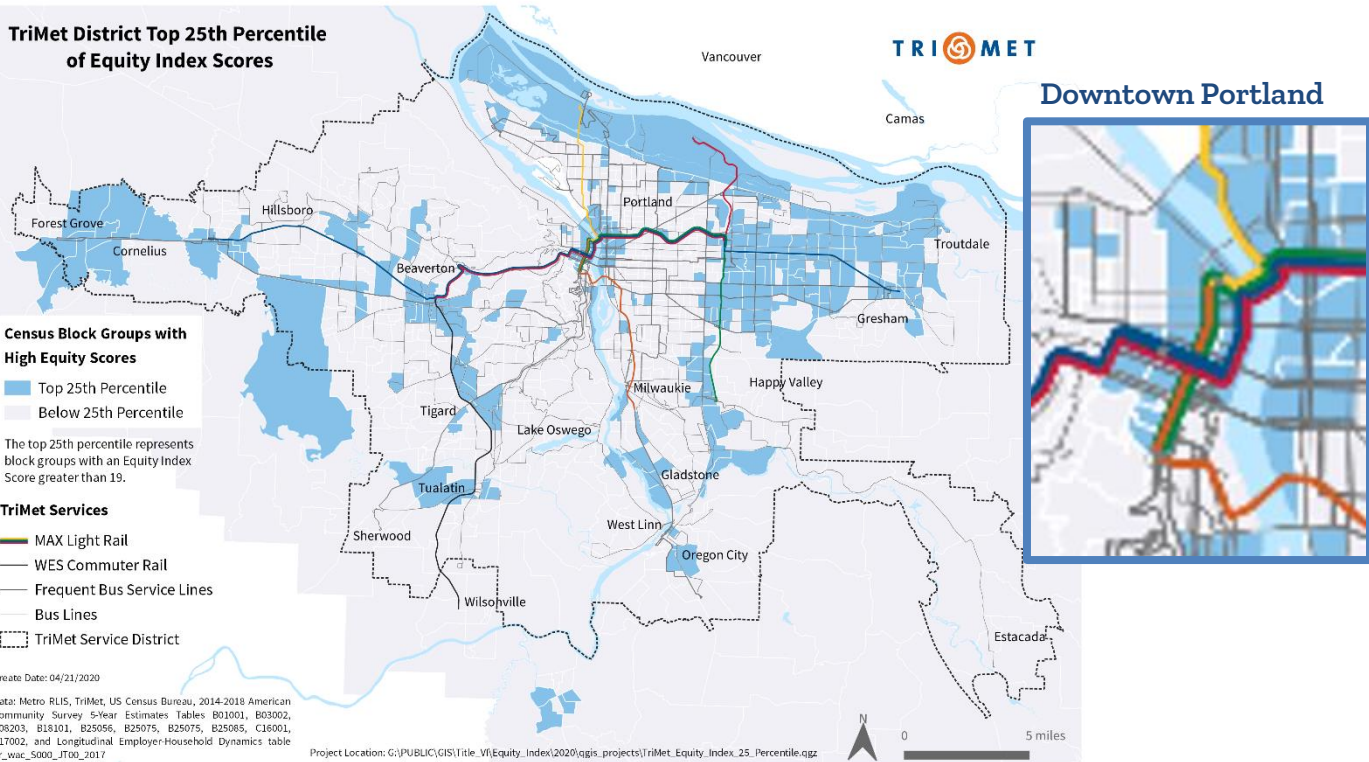


# Equity Areas Update – 25% of blocks

## TriMet District Top 25th Percentile of Equity Index Scores



## Downtown Portland



### Census Block Groups with High Equity Scores

- Top 25th Percentile
- Below 25th Percentile

The top 25th percentile represents block groups with an Equity Index Score greater than 19.

### TriMet Services

- MAX Light Rail
- WES Commuter Rail
- Frequent Bus Service Lines
- Bus Lines
- TriMet Service District

Create Date: 04/21/2020

Data: Metro RLIS, TriMet, US Census Bureau, 2014-2018 American Community Survey 5-Year Estimates Tables B01001, B03002, B08203, B18101, B25056, B25075, B25075, B25085, C16001, C17002, and Longitudinal Employer-Household Dynamics table or\_wac\_5000\_IT00\_3017

Project Location: G:\PUBLIC\GIS\Title\_Vf\Equity\_Index\2020\gis\_projects\TriMet\_Equity\_Index\_25\_Percentile.gxz

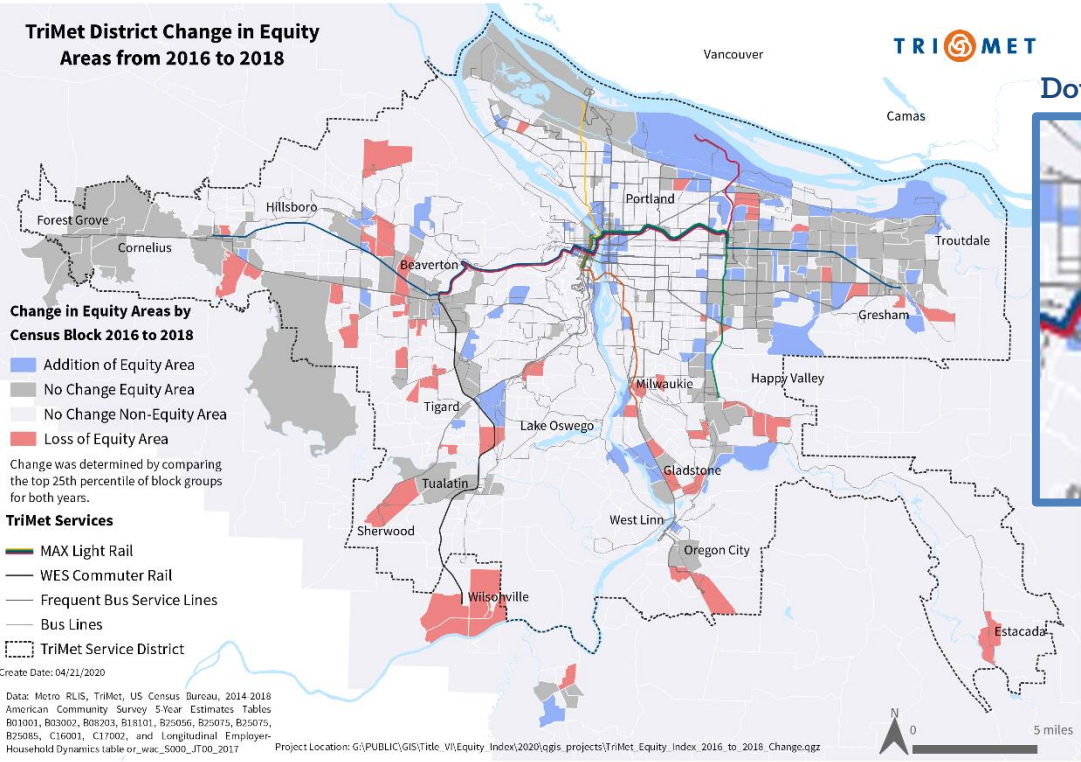


# Equity Areas Update – Change in Blocks

## TriMet District Change in Equity Areas from 2016 to 2018



## Downtown Portland

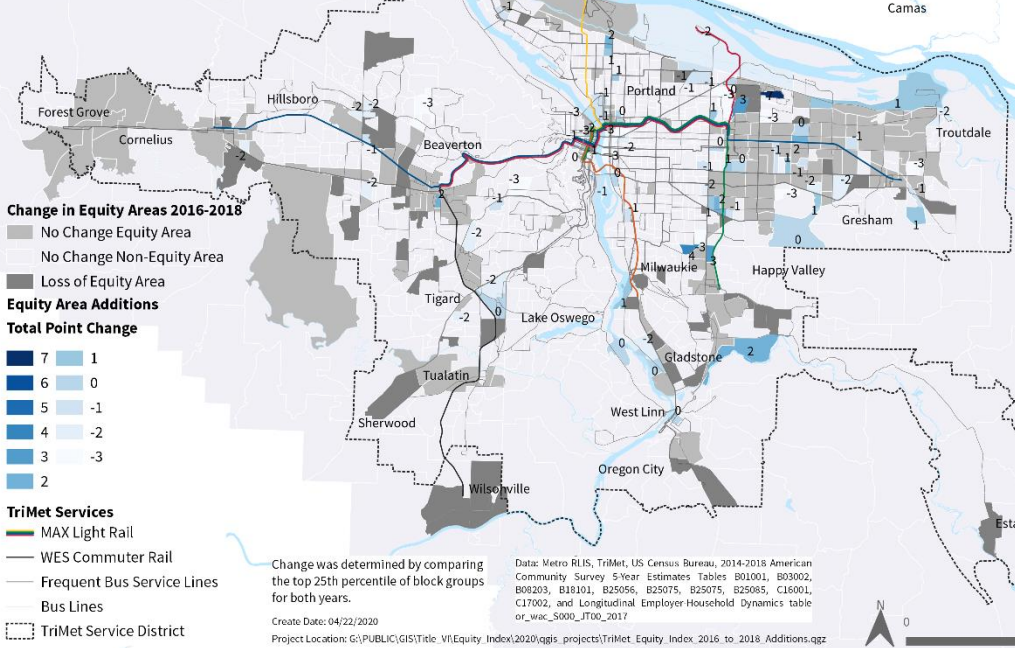


# Equity Areas Update – Change in Blocks

## TriMet District Equity Area Additions 2016 to 2018 with Total Equity Index Point Change



### Downtown Portland



Change was determined by comparing the top 25th percentile of block groups for both years.

Create Date: 04/22/2020  
 Project Location: G:\PUBLIC\GIS\Title\_VI\Equity\_Index\2020\qgis\_projects\TriMet\_Equity\_Index\_2016\_to\_2018\_Additions.gpx

Data: Metro RLIS, TriMet, US Census Bureau, 2014-2018 American Community Survey 5-Year Estimates Tables B01001, B03002, B08003, B18101, B25005, B25075, B25075, B25085, C16001, C17002, and Longitudinal Employer-Household Dynamics table or\_wac\_s000\_1700\_2017



# Equity Areas Update – Change in Blocks

## TriMet District Equity Area Losses 2016 to 2018 with Total Equity Index Point Change



## Downtown Portland



**Change in Equity Areas by  
Census Block 2016 to 2018**

- Addition of Equity Area
- No Change Equity Area
- No Change Non-Equity Area

**Loss of Equity Area  
Total Point Change**

■ -11	■ -5
■ -10	■ -4
■ -9	■ -3
■ -8	■ -2
■ -7	■ -1
■ -6	

**TriMet Services**

- MAX Light Rail
- WES Commuter Rail
- Frequent Bus Service Lines
- Bus Lines
- TriMet Service District

Change was determined by comparing the top 25th percentile of block groups for both years.  
Create Date: 04/21/2020  
Project Location: G:\PUBLIC\GIS\Title\_V\Equity\_Index\2020\gis\_projects\TriMet\_Equity\_Index\_2016\_to\_2018\_Losses.gxz

Data: Metro RLIS, TriMet, US Census Bureau, 2014-2016 American Community Survey 5-Year Estimates Tables B01001, B03002, B05003, B18101, B25056, B25075, B25075, B25085, C16001, C17002, and Longitudinal Employer-Household Dynamics table or\_wac\_s000 JT00\_2017

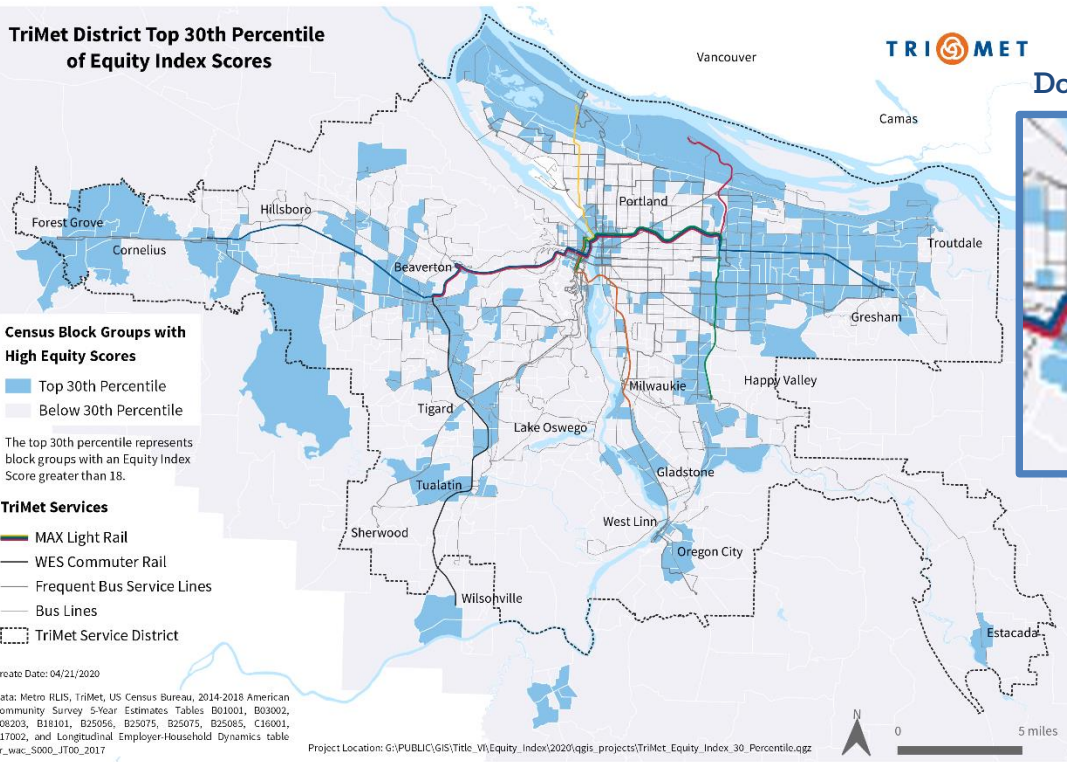


# Equity Areas Update – 30% of blocks

## TriMet District Top 30th Percentile of Equity Index Scores



## Downtown Portland



Create Date: 04/21/2020

Data: Metro IRLIS, TriMet, US Census Bureau, 2014-2018 American Community Survey 5-Year Estimates Tables B01001, B03002, B08203, B18101, B25056, B25075, B26015, B26065, C16001, C17002, and Longitudinal Employer-Household Dynamics table or\_wac\_s000 JT00\_2017

Project Location: G:\PUBLIC\GIS\Title\_V\Equity\_Index\2020\qgis\_projects\TriMet\_Equity\_Index\_30\_Percentile.qgz



# Robert's Rules of Order - Voting

## Voting:

- Committee member makes a motion
- Another committee member “seconds” the motion
- Committee discusses the motion
- Members can offer “friendly amendments”
  - If the person making the motion agrees to the amendment, it can move to a vote as amended
  - If the person making the motion doesn't agree to the amendment, then the original motion is voted upon
- Committee Chairs call for a vote
- If either type of motion (original or amended) fails, then no motion is on the table
- The table is open for future motions





# Meeting Adjourned

